



N° 2 - May 2010

21st International Congress of Clinical Chemistry
 and Laboratory Medicine
 19th IFCC-EFCC European Congress of Clinical Chemistry
 and Laboratory Medicine
 8th Annual Meeting of the German Society of Clinical Chemistry
 and Laboratory Medicine
Berlin, Internationales Congress Centrum
 15-19 May 2011

**WHAT IS IT
 WORLDBLAB NEWS?**

Worldlab News is a periodical issue that reports on the developments of the scientific program and of the organisation of the Congress;

Worldlab News is a handy instrument to get in touch with Berlin and the forthcoming Congress in real time;

Worldlab News will be sent to IFCC National Representatives, to all Officers involved in IFCC, EFCC, to IFCC Corporate Members and other Companies, and to everyone who has shown interest in the Congress;

Worldlab News may be freely quoted in journals or newsletters and even photocopied, provided the editor (IFCC-Worldlab-Euromedlab Berlin 2011 Organizing Secretariat, Milan, Italy) is mentioned.

Scientific Secretariat

German Society for Clinical Chemistry and Laboratory Medicine (DGKL)

Im Mühlenbach 52 b
 53127 Bonn

Phone: +49 (0)228 92 68 95 22

Fax: +49 (0)228 92 68 95 27

www.dgkl.de/english/index.htm

Issued by

**Organizing Secretariat
 MZ Congressi**

- Patrizia Sirtori -

Via Carlo Farini 81
 20159 Milano-Italy

Phone: +39 (0)2 66802323

Fax: +39 (0)2 6686699

E-mail: info@berlin2011.org



w w w . b e r l i n 2 0 1 1 . o r g

**ABSTRACT SUBMISSION &
 REGISTRATION ONLINE SYSTEMS
 SOON AVAILABLE!!**

www.berlin2011.org

- HOME
- Auspices
- Presidents' invitation
- General Information
- Registration
- Berlin
- Abstracts
- Exhibition
- Newsletter

We invite you to visit the proper sections of the web site and follow the instructions.

You will find an easy way to submit your abstract and register to the Congress!

MARK YOUR CALENDAR

15 January 2011

Poster Abstract Deadline

30 March 2011

Deadline for Reduced Fees
 Registration

contents	Abstract & registration systems	p. 1
	Week Agenda	p. 2-3
	Travel to Berlin	p. 4
	Summer in Berlin	p. 5
	Around the World for promotion	p. 6
	List of Sponsors	p. 7

Week Agenda

Sunday 15 May
HALL 1
17.30-19.30 OPENING CEREMONY
19.30-22.30 WELCOME PARTY

Monday 16 May								
room	HALL 1	HALL 3	HALL 8	HALL 14.2	HALL 7	HALL 4/5	HALL 9	HALL 10
CAPACITY	3224	808	138	270	270	250	180	190
7.30 8.30	BREAKFAST SEMINARS 1-5							
9.00 11.00	SYM 1	SYM 2	9.00-10.30 WORKSHO P 1	SYM 3	IFCC 1	SYM 4	DGKL 1	9.00-10.30 WORKSHO P 2
11.00-11.30								
11.30 12.30	PLEN 1 (3 speakers)							
LUNCH TIME								
12.30-14.30	Walking Poster Session (poster area)		13.00 14.00 ISW 1	13.00 14.00 ISW 2	13.00 14.00 ISW 3	13.00 14.00 ISW 4	13.00 14.00 ISW 5	13.00 14.00 ISW 6
14.30-16.30	SYM 5	SYM 6	14.30-16.00 WORKSHO P 3	14.15 15.15 ISW 7	EPCC 1	14.15 15.15 ISW 8	DGKL 2	to be defined
				15.30 16.30 ISW 9		15.30 16.30 ISW 10		
16.45 17.45			16.45 17.45 ISW 11	16.45 17.45 ISW 12	16.45 17.45 ISW 13	16.45 17.45 ISW 14	16.45 17.45 ISW 15	16.45 17.45 ISW 16
evening	SPEAKERS AND VP DINNER (FREE EVENING FOR COMPANIES' EVENTS)							

Tuesday 17 May								
room	HALL 1	HALL 3	HALL 8	HALL 14.2	HALL 7	HALL 4/5	HALL 9	HALL 10
CAPACITY	3224	808	138	270	270	250	180	190
7.30 8.30	BREAKFAST SEMINARS (8 rooms) 6-10							
9.00 11.00	SYM 7	to be defined	9.00-10.30 WORKSHO P 4	SYM 8	IFCC 2	SYM 9	DGKL 3	9.00-10.30 WORKSHO P 5
11.00-11.30								
11.30 12.30	PLEN 2 (3 speakers)							
LUNCH TIME								
12.30-14.30	Walking Poster Session (poster area)		13.00 14.00 ISW 18	13.00 14.00 ISW 19	13.00 14.00 ISW 20	13.00 14.00 ISW 21	13.00 14.00 ISW 22	13.00 14.00 ISW 23
14.30-16.30	SYM 10	SYM 11	14.30-16.00 WORKSHO P 6	14.15 15.15 ISW 24	EPCC 2	14.15 15.15 ISW 25	DGKL 4	to be defined
				15.30 16.30 ISW 26		15.30 16.30 ISW 27		
16.45 17.45			16.45 17.45 ISW 28	16.45 17.45 ISW 29	16.45 17.45 ISW 30	16.45 17.45 ISW 31	16.45 17.45 ISW 32	16.45 17.45 ISW 33
evening	FREE EVENING FOR COMPANIES' EVENTS							

Week Agenda

Wednesday 18 May								
room	HALL 1	HALL 3	HALL 8	HALL 14.2	HALL 7	HALL 4/6	HALL 9	HALL 10
CAPACITY	3224	806	138	207	227	250	183	180
7.30 8.30	BREAKFAST SEMINARS (8 rooms) 11-15							
9.00 11.00	SYM 12	to be defined	9.00 10.30 WORKSHO P 7	SYM 13	IFCC 3	SYM 14	DGKL 5	9.00 10.30 WORKSHO P 8
11.00 11.30								
11.30 12.30	PLEN 3 (3 speakers)							
LUNCH TIME								
12.30 14.30	Walking Poster Session (poster area)		13.00 14.00 ISW 35	13.00 14.00 ISW 36	13.00 14.00 ISW 37	13.00 14.00 ISW 38	13.00 14.00 ISW 39	13.00 14.00 ISW 40
14.30 16.30	SYM 15	SYM 16	14.30 16.00 WORKSHO P 9	14.15 15.15 ISW 41	EFCC 3	14.15 15.15 ISW 42	DGKL 6	to be defined
				15.30 16.30 ISW 43		15.30 16.30 ISW 44		
16.45 17.45			16.45 17.45 ISW 45	16.45 17.45 ISW 46	16.45 17.45 ISW 47	16.45 17.45 ISW 48	16.45 17.45 ISW 49	16.45 17.45 ISW 50
evening	CONGRESS PARTY							

Thursday 19 May								
room	HALL 1	HALL 3	HALL 8	HALL 14.2	HALL 7	HALL 4/6	HALL 9	HALL 10
CAPACITY	3224	806	138	207	270	250	188	188
7.30 8.30	BREAKFAST SEMINARS (8 rooms) 19-20							
9.00 11.00	SYM 17	SYM 18	9.00 10.30 WORKSHO P 10	SYM 19	EFCC 4	SYM 20	to be defined	9.00 10.30 WORKSHO P 11
11.00 11.30								
11.30 12.30	PLEN 4 (3 speakers)							
LUNCH TIME								
12.30 14.30			13.00 14.00 ISW 52	13.00 14.00 ISW 53	13.00 14.00 ISW 54	13.00 14.00 ISW 55	13.00 14.00 ISW 56	13.00 14.00 ISW 57
14.30 16.30	SYM 21	SYM 22	14.30 16.00 WORKSHO P 12	14.15 15.15 ISW 58	IFCC 4	14.15 15.15 ISW 59	to be defined	to be defined
				15.30 16.30 ISW 60		15.30 16.30 ISW 61		
16.45 17.45			16.45 17.45 ISW 62	16.45 17.45 ISW 63	16.45 17.45 ISW 64	16.45 17.45 ISW 65	16.45 17.45 ISW 66	16.45 17.45 ISW 67
	CLOSING CEREMONY							
evening	FREE EVENING FOR COMPANIES' EVENTS							

Travel to Berlin



Berlin, Capital of the Federal Republic of Germany, is located at the heart of Europe and also, after EU enlargement in 2004, at the centre of the European Community. With about 3,400,000 inhabitants, Berlin is the largest City in Germany.

Arrival by plane

Thanks to a very well developed national and international air route system you can quickly reach Berlin in a comfortable way. The city is served by many international carriers from all over the world. Berlin's excellent public transport system makes incoming or outgoing airport links easy and fast.

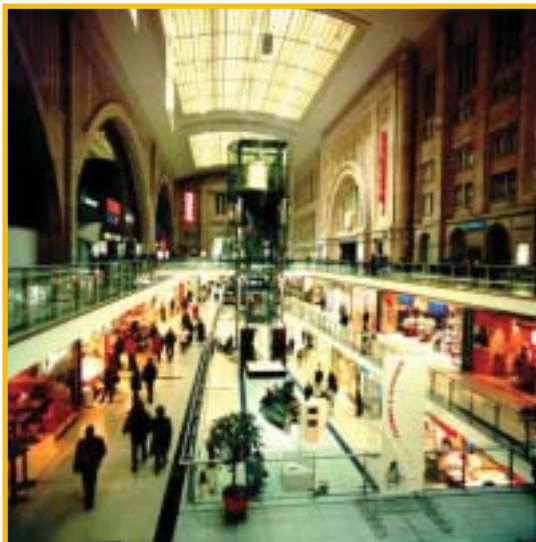
The airports Tegel or Schönefeld are only around 30 minutes away from the city centre. For further information on the two airports <http://www.berlin-airport.de/EN/index.html>.



Arrival by train

You can reach Berlin from all directions by using the fast InterCityExpress-, InterCity- and EuroCity Trains.

The new central station Berlin Hauptbahnhof in the heart of Berlin was opened in 2006 and a new concept for the railways and stations in Berlin was installed. All train stations are well connected to the public transport system.



Arrival by car

All motorways to Berlin lead to the Berliner Ring (A10). From there you can get to the inner city on various access roads.

If your destination is situated in the western city, you should use the A115. The A113 takes you to the south-east quarters. For access to the north of the city, make use of the A114 for Pankow/Weissensee, for Reinickendorf the A111.

From January 1, 2008 Berlin's inner city will become an "environmental zone" where only cars that are up to emission standards are allowed.

Arrival by coach

The main bus station (Zentraler Omni-busbahnhof Berlin-ZOB) is conveniently located opposite the ICC and is a hub for national and international bus routes and special charters to and from Berlin.



Summer in Berlin

Summer in the capital, that's also a summer full of fascinating events.

Music festivals in medieval scenery, huge sand sculptures and concerts all over the city – that's exclusive in Berlin.

Citadel Music Festival • May 30 - August 31, 2010

The Berlin open air festival at Spandau Citadel promises extraordinary highlights from rock, pop and classical music. This year Patti Smith, Schiller and Gregorian - Masters of Chant perform against a historical background.



Jazz in Kreuzberg - Festival on Bergmannstraße • June 25 to 27, 2010

A colourful and cheery music festival in the heart of Kreuzberg. On three stages, loads of different jazz bands will demonstrate their proficiency.



Berlin by boat

Enjoy Berlin's sights from a breezy boat deck and marvel at some undiscovered romantic corner of the capital.



The hippest Beach Bars

Palm trees, sand and cocktails – lots of stylish beach bars create holiday feeling right in the heart of the capital. Sunbathing in a canvas chair, digging one's feet in the sand, listening to reggae music and enjoying a great view at the sparkling river Spree – here no one is missing the Caribbean.



Around the World for promotion

One year to go!

The IFCC-Worldlab-Euromedlab Berlin 2011 is approaching and a strong promotional campaign is now being held



Promotion of the IFCC-Worldlab-Euromedlab Berlin 2011 Congress on the occasion of the FOCUS 2010 which was held in Glasgow, Scotland, from 10 to 13 May 2010.

- Berlin booth
- Delivery of the First Announcement, tourist information and small gadgets

The IFCC-Worldlab-Euromedlab Berlin 2011 gets to the heart of its promotional phase, with the Congress Preliminary Program to be distributed at the AACC 2010.



LIST OF SPONSORS

as of May 2010

PLATINUM



GOLD



BRONZE

